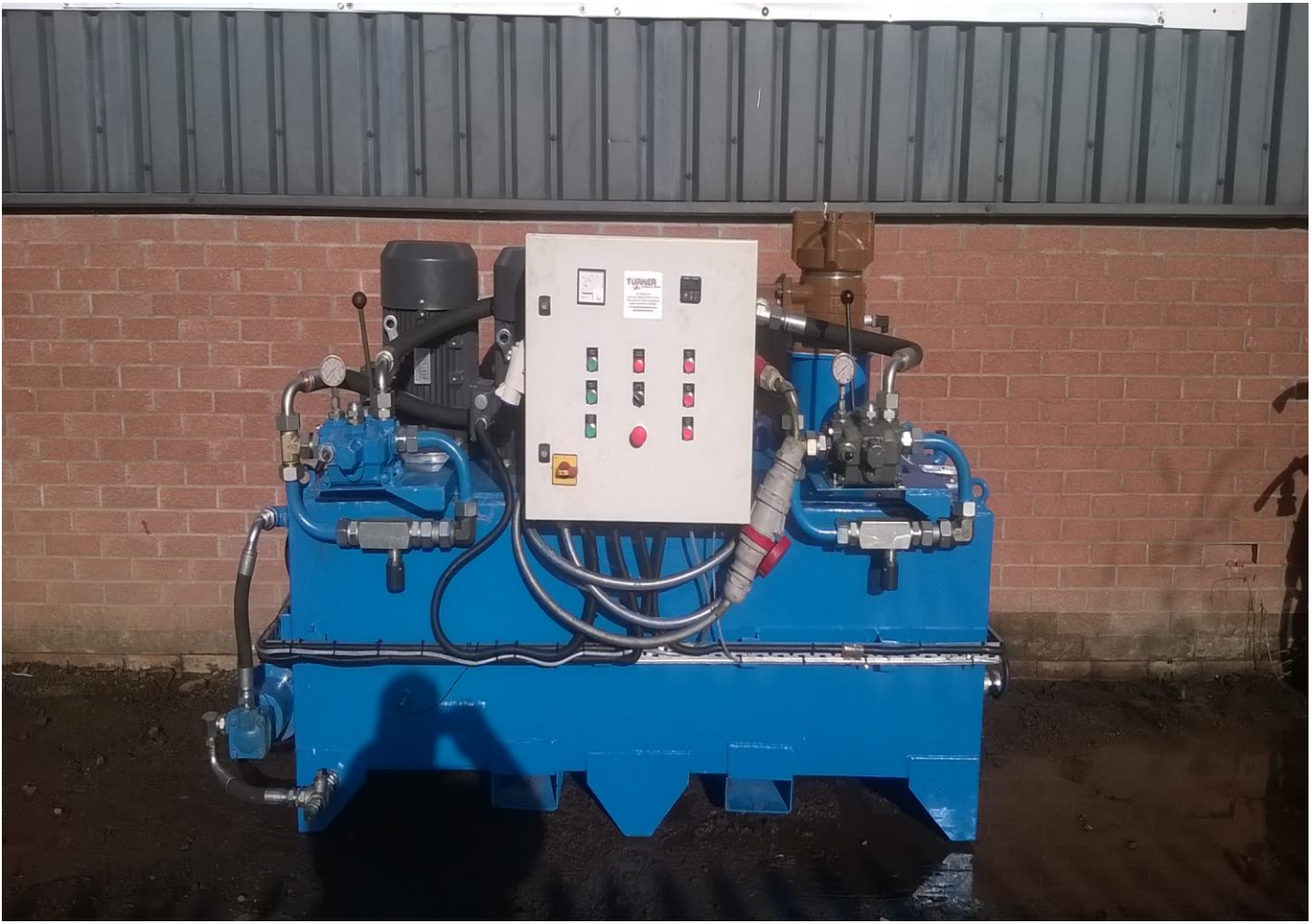


Flushing Rig No.5
Mineral Oil



Recommended Operating Conditions:

- Fluid viscosity, normal operating conditions 16 to 220 centistoke.
- Fluid temperature should not exceed 75°C.
- Inlet pressure; for best operation with mineral oil, pressure should not exceed minus 0.237 bar (7 in HG).
- Cast iron construction.
- Compatible with mineral oil fluid
- Motor No.1 = TEC – 15.043TECAB3-45DEG – Frame MS 160L 1-4 1450 Rev/Min – 415 Volt – 15kw – 50hz
- Motor No.2 = TEC – 15.043TECAB3-45DEG – Frame MS 160L 1-4 1450 Rev/Min – 415 Volt – 15kw – 50hz
- Pump : Permco Gear Pump P7500 – 198cc per Rev – 278 LPM @ 30 Bar (Mineral Oil)
- Pump : Permco Gear Pump P7500 – 198cc per Rev – 278 LPM @ 30 Bar (Mineral Oil)



Flushing Rig No.5

- Hydac Steel Return Filter 2600R...BN4HC – Full micron Range
- 2 Off x 3kw Heaters with thermostatic control
- MP Filtri ICM particle counter with water sensor and temperature sensor (Mineral Oil)
- Flowtechnik RE4 Turbine 25-600 LPM with Analogue Output (mineral Oil)
- Nitrogen blow down point with isolation
- Tank capacity is 1000 litres

Dimensions of Rig:

- Approximately 860 kg Empty
- Fork Truck from one side only
- Length 2400mm X Width 1130mm X Height 1155mm

Operating:

- Pump No.1 Flow range from 0 – 278 Litres per minute adjustable via Flow control
- Pump No. 2 Flow range from 0 – 278 Litres per minute adjustable via Flow control
- Pressure range from 3-30 Bar adjustable via pressure relief valve
- 2 off x Single manual spool block

Optional Equipment:

- Hydac OLF 30/30 single pass Filtration offline for Tank
- Hand Help Hydrotechnik 3020 Data log Unit with 3 channels
- Nitrogen Bottle with regulator and blow down hose

The above unit is available with or without Trained Technician for short or long term hire. If the unit is required on a hire only basis then a day's training course charge will be applicable.